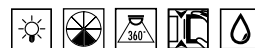


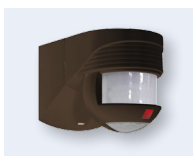
LUXOMAT® LC-Click-N 140



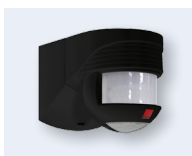
With Anti-creep



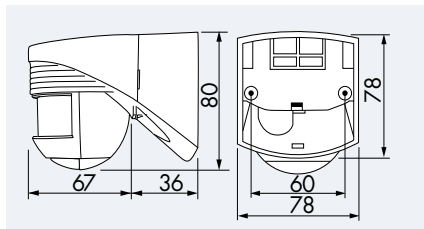
white **NEW!**



brown



black

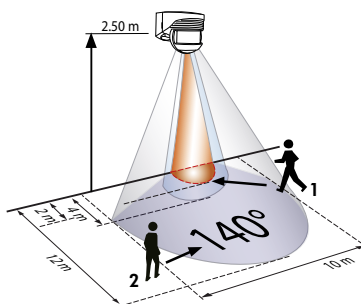


TECHNICAL DATA

- 230V~ ±10%
- 140°
- max. 12 m when walking across (tangential)
- IP44 / Class II / CE
- L 103 x W 78 x H 80 mm
- 25°C to +50°C
- Housing UV- and shock-resistant Polycarbonate
- Channel 1 (light control)**
- 1000 W, cosφ = 1
- 4 sec. - 10 min.
- 2 - 1000 Lux

PRODUCT INFORMATION

- Motion detector with detection area of 140°
- Spherical head adjustable in two levels
- 360° anti-creep for a gapless monitoring
- Range adjustable by moving the sensor-head
- The detection area can be altered by blinds, which are included. The blinds can be clipped-on and moved to stop unwanted detection.
- Adjustment light level and time setting by screwdriver and potentiometers at the bottom of the sensor head infinitely variable
- Wall mounting
- Easy installation with plug-in socket
- **Application examples:** monitoring for narrow premises, ways, gateways or at door sills



- 1 ■ Walking towards
- 2 ■ Walking across
- Anti-creep

ACCESSORY (OPTIONAL)

Wire basket



Description	Colour	Part number
LC-Click-N 140	white	91001
LC-Click-N 140	brown	91011
LC-Click-N 140	black	91021
Accessory (optional)		
Wire basket BSK	white	92467